

FILTRO EN Y

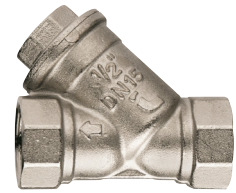
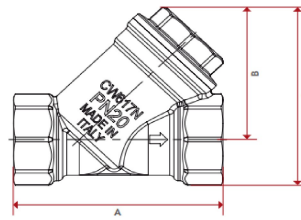
LATÓN NIQUELADO 300 MICRAS

| Ref. | Rosca | Presión máx. trabajo (bar) | Ref. recambio filtro | Cotas expresadas en mm. | | | |
|-----------|--------|----------------------------|----------------------|-------------------------|-----|------|-------|
| | | | | DN | A | B | C |
| VAF 02-02 | 1/4" | 20 bar | VAFT02 | 8 | 55 | 40 | 49,7 |
| VAF 03-03 | 3/8" | 20 bar | VAFT03 | 10 | 55 | 40 | 51,2 |
| VAF 04-04 | 1/2" | 20 bar | VAFT04 | 15 | 58 | 40 | 53,25 |
| VAF 05-05 | 3/4" | 20 bar | VAFT05 | 20 | 70 | 48 | 64,6 |
| VAF 06-06 | 1" | 20 bar | VAFT06 | 25 | 87 | 56 | 76,35 |
| VAF 07-07 | 1 1/4" | 20 bar | VAFT07 | 32 | 96 | 64 | 87,7 |
| VAF 08-08 | 1 1/2" | 20 bar | VAFT08 | 40 | 106 | 73 | 100 |
| VAF 09-09 | 2" | 20 bar | VAFT09 | 50 | 126 | 88,5 | 122 |

Temperatura de trabajo: -20°C a 110°C.



CONSÚLTENOS OTROS GRADOS DE FILTRACIÓN Y OTRAS MEDIDAS.



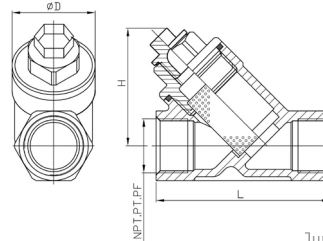
VAF

ACERO INOXIDABLE AISI 316 1000 MICRAS

INOX

| Ref. | Rosca | Presión máx. trabajo (bar) | Ref. recambio filtro | Cotas expresadas en mm. | | | |
|------------|--------|----------------------------|----------------------|-------------------------|-----|-----|-----|
| | | | | DN (A) | L | H | D |
| VXAF 02-02 | 1/4" | 55 bar | VXAFTM02 | 8 | 65 | 45 | 31 |
| VXAF 03-03 | 3/8" | 55 bar | VXAFTM03 | 10 | 65 | 45 | 31 |
| VXAF 04-04 | 1/2" | 55 bar | VXAFTM04 | 15 | 65 | 45 | 31 |
| VXAF 05-05 | 3/4" | 55 bar | VXAFTM05 | 20 | 80 | 53 | 36 |
| VXAF 06-06 | 1" | 55 bar | VXAFTM06 | 25 | 90 | 68 | 45 |
| VXAF 07-07 | 1 1/4" | 55 bar | VXAFTM07 | 32 | 105 | 72 | 50 |
| VXAF 08-08 | 1 1/2" | 55 bar | VXAFTM08 | 40 | 120 | 80 | 59 |
| VXAF 09-09 | 2" | 55 bar | VXAFTM09 | 50 | 140 | 97 | 75 |
| VXAF 10-10 | 2 1/2" | 55 bar | VXAFTM10 | 65 | 170 | 112 | 95 |
| VXAF 11-11 | 3" | 55 bar | VXAFTM11 | 80 | 195 | 129 | 111 |

Temperatura de trabajo: -25°C a 230°C.

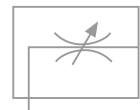


VXAF

Juntas en teflón y o-ring en vitón.

VÁLVULAS REGULADORAS

AGUJAS BIDIRECCIONALES EN LATÓN NIQUELADO (CIERRE TOTAL)



CARACTERÍSTICAS:

- . Cuerpo: latón Niquelado OT58
- . Junta: NBR
- . Pomo: tecnopolímero
- . Presión máx. trabajo: 15 bar
- . Temperatura trabajo: -20°C a +80°C

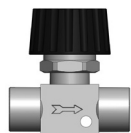
APLICACIONES:

- . Regulación aire comprimido, agua y aceites minerales.

BENEFICIOS:

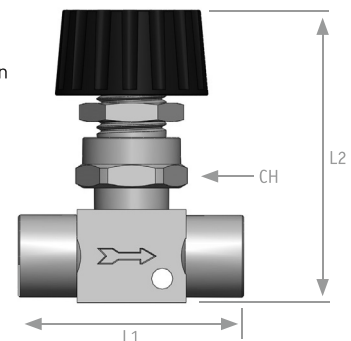
- . Nivel de regulación preciso y cierre total.
- . Versión con pasamuros para paneles.
- . Diseño compacto.
- . Agiliza el tiempo de reparación y/o sustitución.

| Ref. | Rosca | L1 | L2 máx. | CH |
|----------|-------|----|---------|----|
| VRPH0101 | G1/8 | 42 | 51 | 19 |
| VRPH0202 | G1/4 | 46 | 51 | 19 |
| VRPH0303 | G3/8 | 62 | 62 | 22 |
| VRPH0404 | G1/2 | 64 | 64 | 22 |

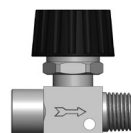


VRPH

Válvula rosca hembra-hembra.



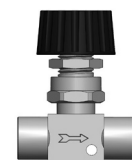
| Ref. | Rosca | L1 | L2 máx. | CH |
|----------|-------|------|---------|----|
| VRPM0101 | 1/8 | 41 | 51 | 19 |
| VRPM0202 | 1/4 | 44 | 51 | 19 |
| VRPM0303 | 3/8 | 55,5 | 51 | 22 |
| VRPM0404 | 1/2 | 59 | 64 | 22 |



VRPM

Válvula rosca macho-hembra.

| Ref. | Rosca | L1 | L2 máx. | CH |
|-----------|-------|----|---------|----|
| VRPPH0101 | G1/8 | 42 | 61 | 19 |
| VRPPH0202 | G1/4 | 46 | 61 | 19 |
| VRPPH0303 | G3/8 | 62 | 76 | 22 |
| VRPPH0404 | G1/2 | 64 | 78 | 22 |



VRPPH

Válvula rosca hembra-hembra panelable.